



METHOD STATEMENT

SIKABIT[®] W-15 FOR BASEMENT

SIKA LIMITED (VIETNAM)

BUILDING TRUST



1 SYSTEM DESCRIPTION

SikaBit® W-15 is a double-sided modified bitumen waterproofing membrane for wet-application. It consists of a cross-laminated PE film and two modified bitumen layers covered with transparent release liners.

2 CHARACTERISTICS / ADVANTAGES

- Safe, easy and fast installation
- No need for special equipment
- Direct application on wet substrate
- Excellent initial and long term adhesion
- Full surface bonding
- Zero water underflow
- Crack-bridging ability
- High tear resistance
- High puncture resistance
- Resistant to chemical corrosion

3 APPLICATION

There are two application methods of SikaBit® W-15: Pre-Application and Post-Application.

- Pre-Application method applies for waterproofing below foundations and base slabs...
- Post-Application method applies for waterproofing of walls, podium slabs, concealed roof...

3.1 SURFACE PREPARATION

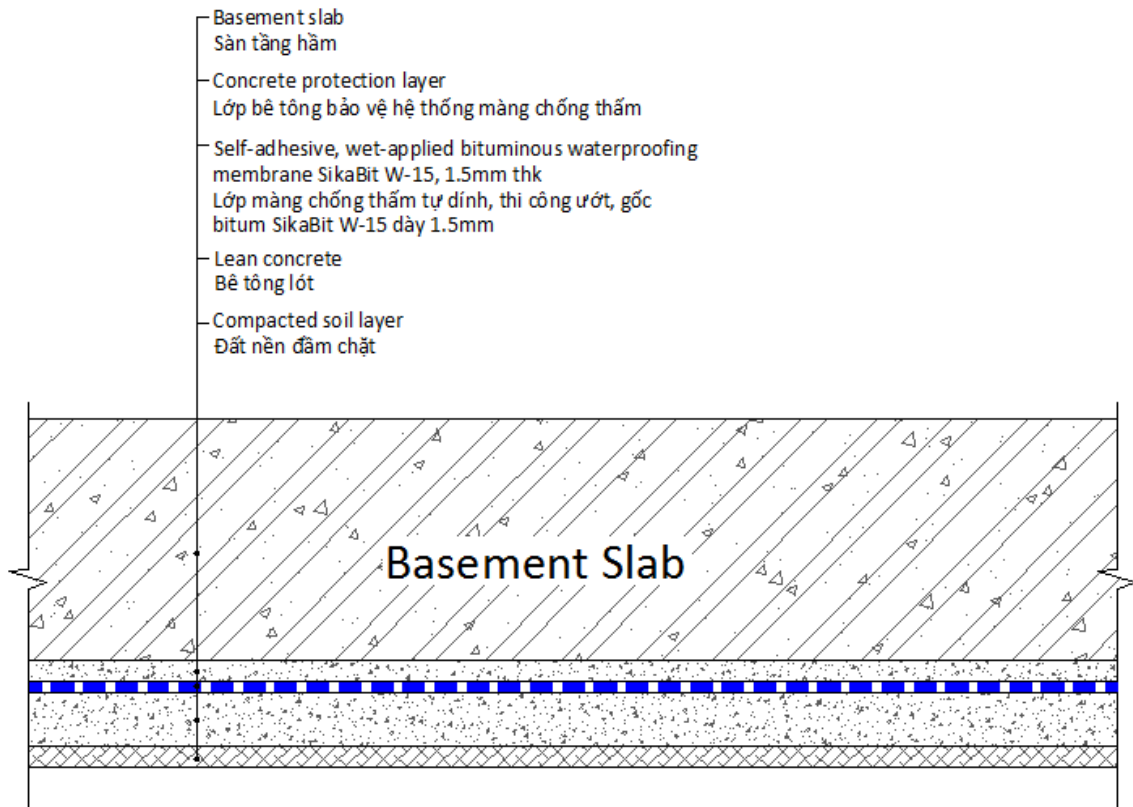
Pre-Application

- Prior to the installation of SikaBit® W-15, a layer of very smooth and solid cement concrete is required as a substrate.
- No standing water is allowed.

Post-Application

- Concrete surface must be clean and free of protrusions.
- All protrusions shall be removed by mechanical tools.
- Concrete substrate must be saturated by water before installing SikaBit® W-15.

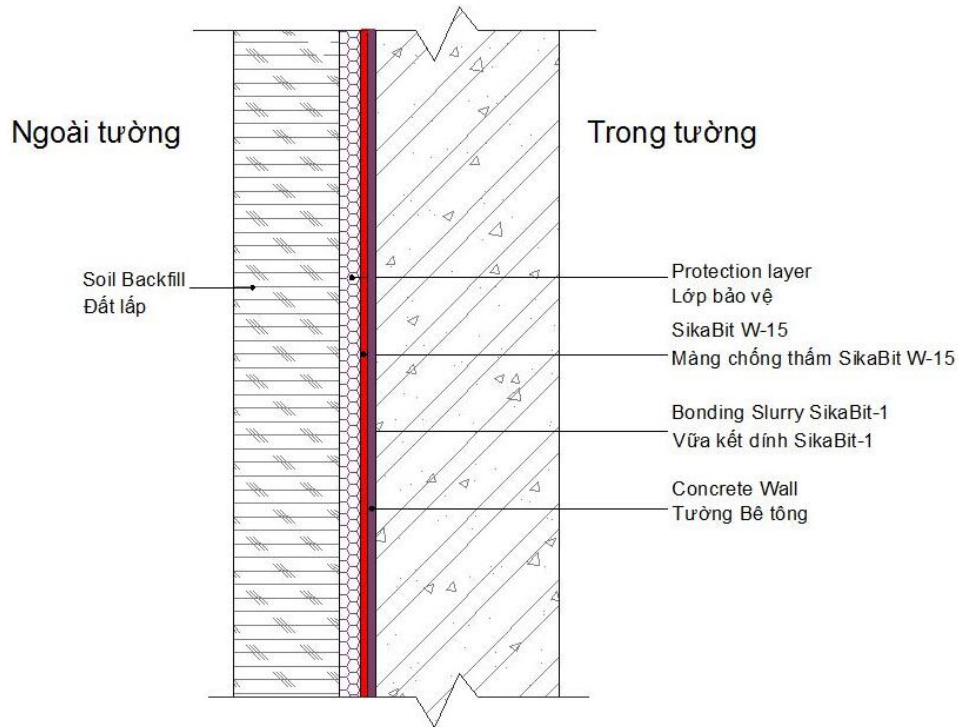
3.2 PRE-APPLICATION



For basement slab

- Unroll and align SikaBit® W-15 membrane to the substrate.
- Using a roller to press firmly the long overlap edges together. The long edges of the membrane are overlapped by min. 80 mm.
- The short edges of the membrane are overlapped in the same way.
- The overlaps need to be staggered.
- A modified cement concrete screed is applied to all horizontal areas after removal of the release liner to protect the SikaBit W-15 membrane.

3.3 POST-APPLICATION



For basement wall

- Apply bonding slurry SikaBit-1 to the substrate with consumption of approx. 2.0 to 3.0 kg/m² (depending on substrate condition).
- Unroll the SikaBit® W-15 membrane, then remove the release liner.
- Press the membrane into the fresh slurry.
- Using a roller to press firmly the long overlap edges together after removal of the release liner . The long edges of the membrane are overlapped by min. 80 mm.
- The short edges of the membrane are overlapped in the same way.
- The overlaps need to be staggered.

3.4 CURING

- It takes a few days for the bond strength between the membrane and concrete substrate to fully develop.
- The installed SikaBit® W-15 shall be protected against mechanical damage with a suitable protective layer.

LEGAL NOTES

The information, and, in particular, the recommendations relating to the application and end-use of Sika products, are given in good faith based on Sika's current knowledge and experience of the products when properly stored, handled and applied under normal conditions in accordance with Sika's recommendations. In practice, the differences in materials, substrates and actual site conditions are such that no warranty in respect of merchantability or of fitness for a particular purpose, nor any liability arising out of any legal relationship whatsoever, can be inferred either from this information, or from any written recommendations, or from any other advice offered. The user of the product must test the products suitability for the intended application and purpose. Sika reserves the right to change the properties of its products. The proprietary rights of third parties must be observed. All orders are accepted subject to our current terms of sale and delivery. Users must always refer to the most recent issue of the local Product Data Sheet for the product concerned, copies of which will be supplied on request.

Sika Limited (Vietnam)

Nhon Trach 1 Industrial Zone
Nhon Trach, Dong Nai
Vietnam
vnm.sika.com

Phone: (84-251) 3560 700
Fax: (84-251) 3560 699
Mail: sikavietnam@vn.sika.com

Method Statement

SikaBit® W-15 for Basement
Edition: 09/2018